

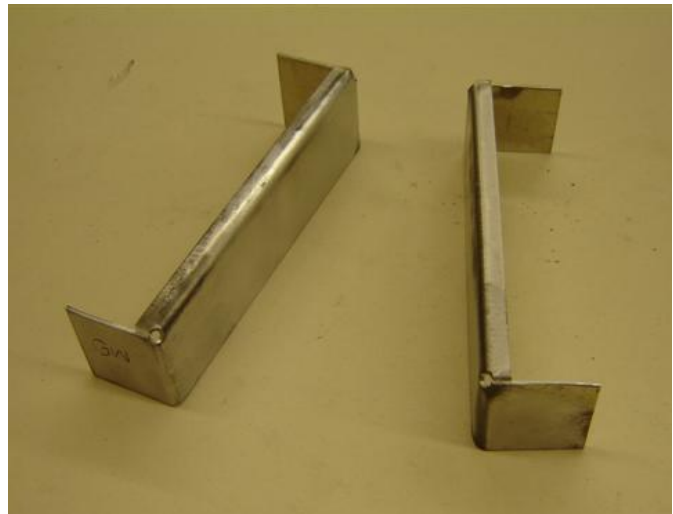
PROJECT - Soft Jaws

Foundation Skills

The Purpose...

In this activity you will fabricate a set of aluminum soft jaws.

Did you notice the serrated gripping surface of the Vice Jaws? This will damage the surface of your project. Soft Jaws are used to protect material from damage while clamped in a vice.

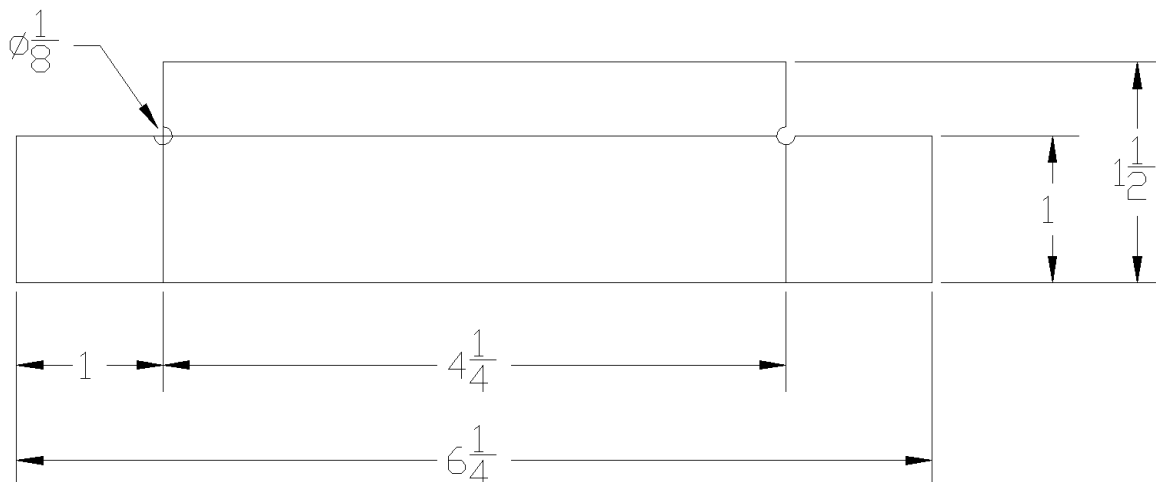


You will use these jaws with your next projects.

The Preparation...

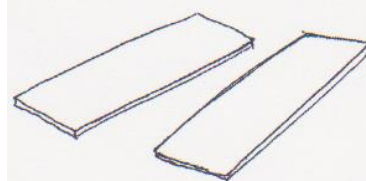
For this activity you will need the following:

- 12-1/2" x 1-1/2" 18ga sheet aluminum
- Tin Snips
- Imperial ruler
- Scriber
- Centre punch
- Ball-pein hammer
- Whitney Punch
- Files - single cut and double cut
- Lettering stamps
- Box & Pan Brake

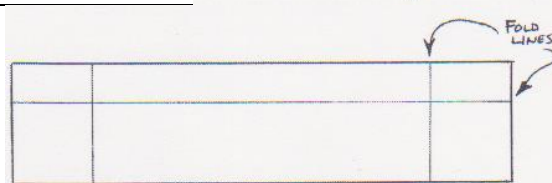


The Procedure...

CUT two pieces of 18ga aluminum to exactly **6-1/4"** in length with Tin Snips

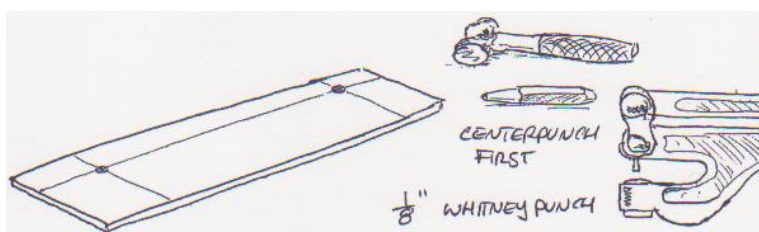


MARK the fold lines for the top and side flaps (1" in and 1" up from the bottom)



CENTER PUNCH the location of the holes

PUNCH the holes using a Whitney Punch and a **1/8"** bit

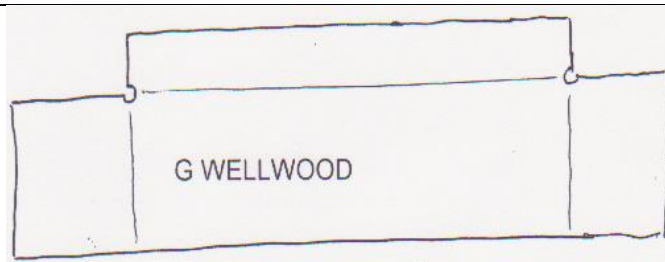


CUT the corner notches with Tin Snips

DO NOT OVER-CUT THE HOLE

FILE off any sharp edges

STAMP your first initial and your last name on BOTH JAWS with Letter Stamps



BEND the top flap on the Box & Pan Brake to exactly 90°

BEND the side flaps to exactly 90°

DON'T CRUSH THE TOP FLAP!!!



HAND IN the BEST ONE of your finished soft jaws for marking