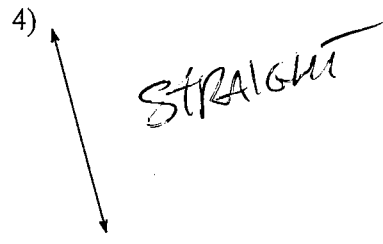
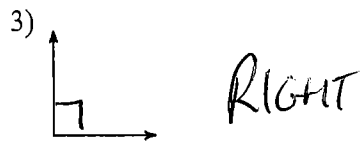
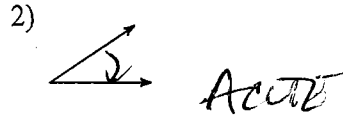
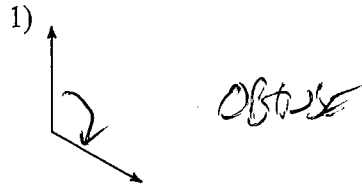


Assignment 5.1

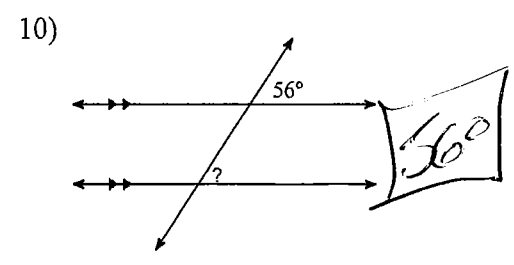
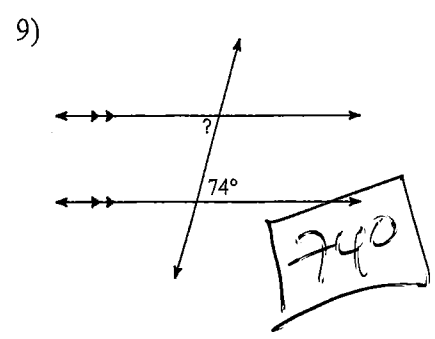
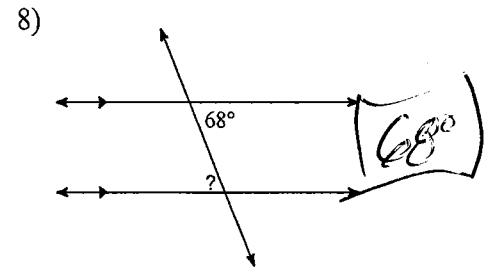
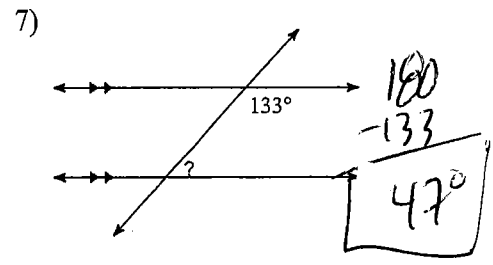
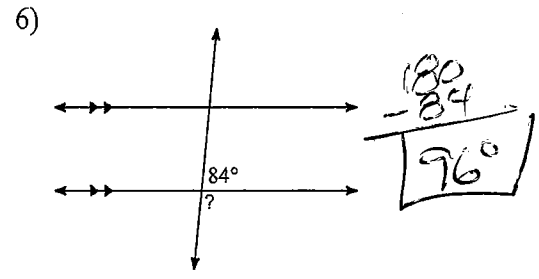
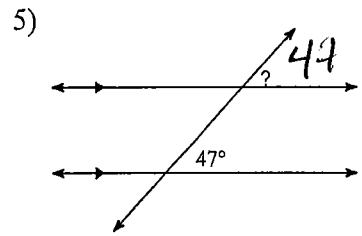
Name _____

© 2017 Kuta Software LLC. All rights reserved.

Classify each angle as acute, obtuse, right, or straight.

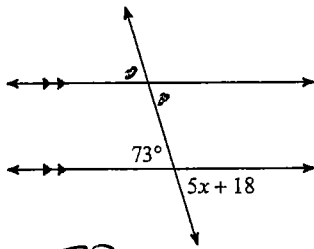


Find the measure of each angle indicated.



Solve for x.

11)



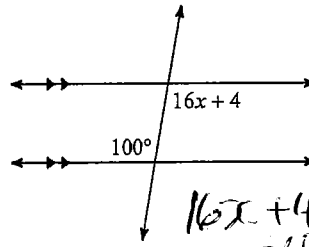
$$73 = 5x + 18$$

$$\begin{array}{r} 73 \\ -18 \\ \hline \end{array}$$

$$\frac{55}{5} = \frac{5x}{5}$$

$$\boxed{x = 11}$$

12)



$$16x + 4 = 100$$

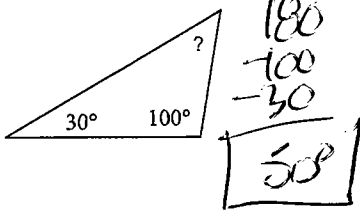
$$\begin{array}{r} 16x + 4 \\ -4 \quad -4 \\ \hline \end{array}$$

$$\frac{16x}{16} = \frac{96}{16}$$

$$\boxed{x = 6}$$

Find the measure of each angle indicated.

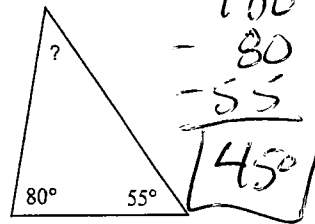
13)



$$\begin{array}{r} 180 \\ -100 \\ -30 \\ \hline \end{array}$$

$$\boxed{50}$$

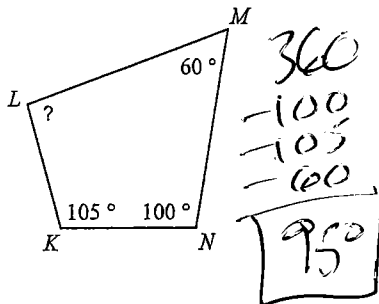
14)



$$\begin{array}{r} 180 \\ -80 \\ -55 \\ \hline \end{array}$$

$$\boxed{45}$$

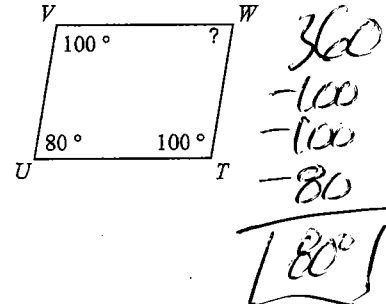
15)



$$\begin{array}{r} 360 \\ -100 \\ -105 \\ -60 \\ \hline \end{array}$$

$$\boxed{95}$$

16)

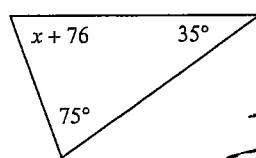


$$\begin{array}{r} 360 \\ -100 \\ -100 \\ -80 \\ \hline \end{array}$$

$$\boxed{80}$$

Solve for x.

17)



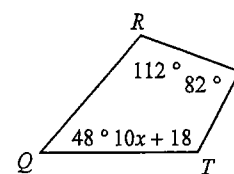
$$\begin{array}{r} 180 \\ -35 \\ -75 \\ \hline \end{array}$$

$$x + 76 = 70$$

$$\begin{array}{r} x + 76 \\ -76 \quad -76 \\ \hline \end{array}$$

$$\boxed{x = -6}$$

18)



$$\begin{array}{r} 360 \\ -112 \\ -82 \\ -48 \\ \hline \end{array}$$

$$10x + 18 = 118$$

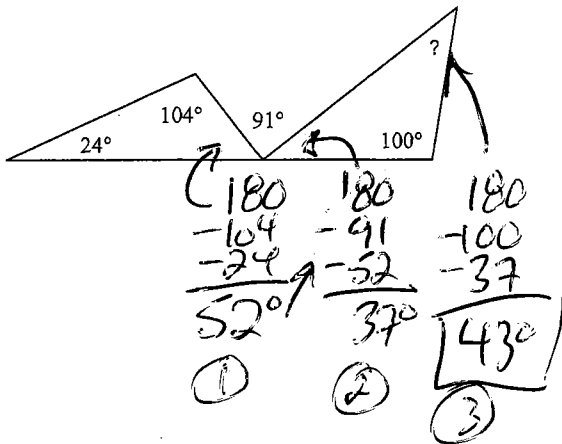
$$\begin{array}{r} 10x + 18 \\ -18 \quad -18 \\ \hline \end{array}$$

$$\frac{10x}{10} = \frac{100}{10}$$

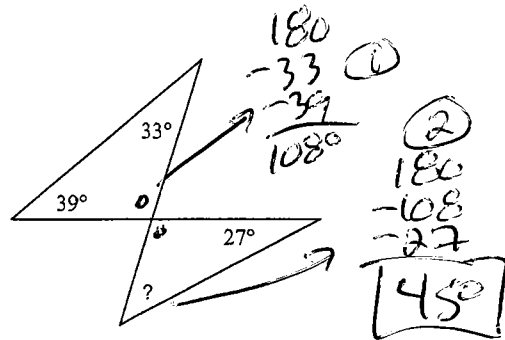
$$\boxed{x = 10}$$

Find the measure of each angle indicated.

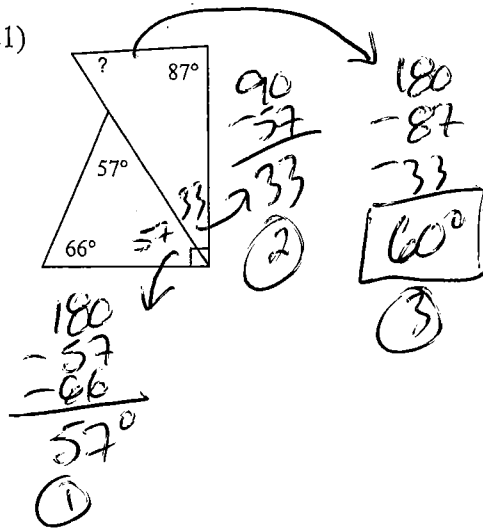
19)



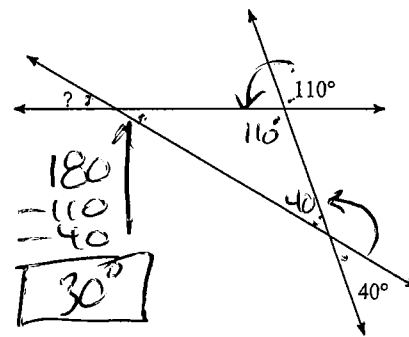
20)



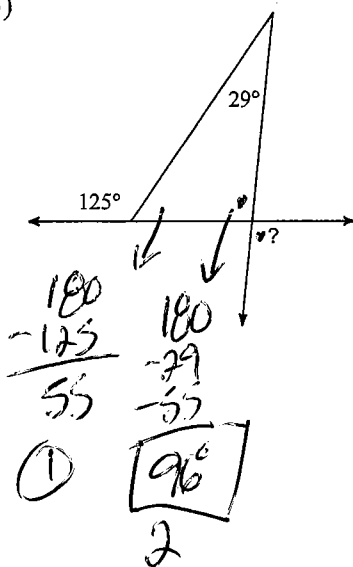
21)



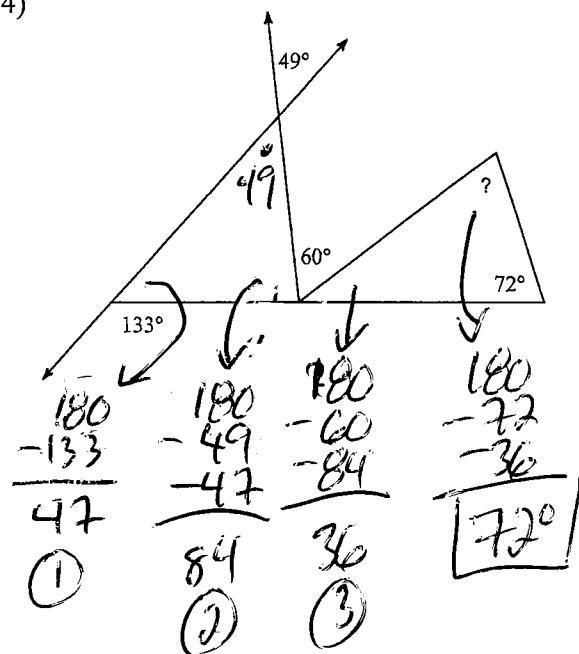
22)



23)



24)



Assignment 5.1 Cont.

1. Complete the Chart

Angle	Classify	Complement	Supplement	Bisected
50	ACUTE	40°	130°	25°
90-12	78° ACUTE	12	102°	39°
180-60	120° OBTUSE	N/A	60	60°
120×2	240° REFLEX	N/A	N/A	120

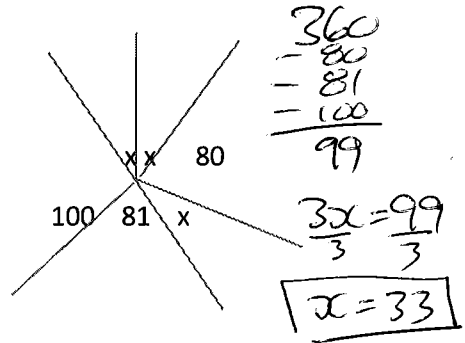
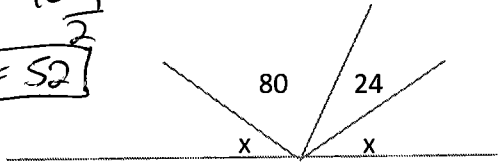
2.

$$2x = 80 + 24$$

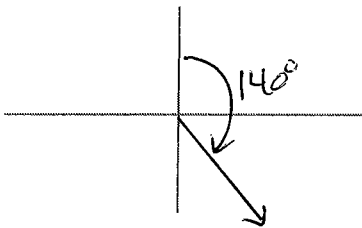
$$2x = 104$$

$$\frac{2x}{2} = \frac{104}{2}$$

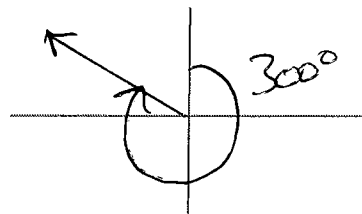
$$x = 52$$



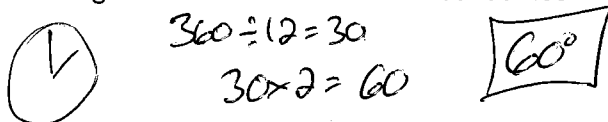
3. a. Draw a bearing of 140°



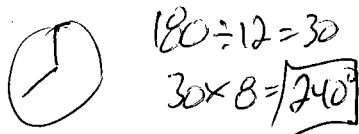
b. Draw a bearing of 300°



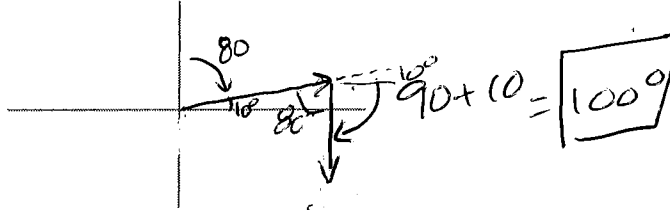
4. a. Determine the angle between the hands of a clock at 2:00



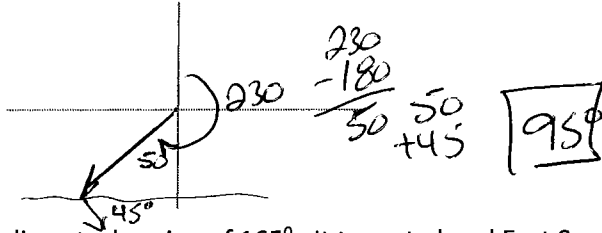
b. Determine the reflex angle between the hands of a clock at 8:00



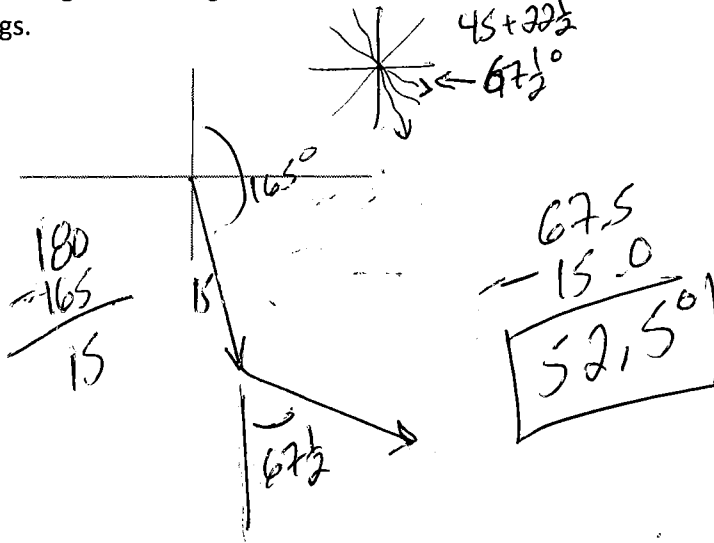
5. A ship is heading at a bearing of 80° and turns to head South. Determine the angle measure between the bearings.



6. A ship is heading at a bearing of 230° . It turns to head South East. Determine the angle measure between the bearings.



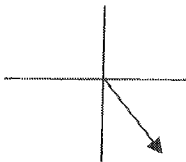
7. A ship is heading at a bearing of 165° . It turns to head East South East. Determine the angle measure between the bearings.



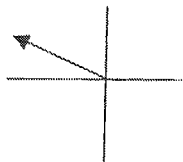
1.

Angle	Classify	Complement	Supplement	Bisected
50	acute	40	130	25
78	acute	12	102	39
120	obtuse	Na	60	60
240	reflex	Na	Na	120

2a. 38 b. 33 3. a.



b.



4. a. 60° b. 240° 5. 100° 6. 95° 7. 52.5°

Assignment 5.1 Cont.

1. Complete the Chart

Angle	Classify	Complement	Supplement	Bisected
50	ACUTE	40°	130°	25°
90-12	78° ACUTE	12	102°	39°
180-60	120° OBTUSE	N/A	60	60°
120×2	240° REFLEX	N/A	N/A	120

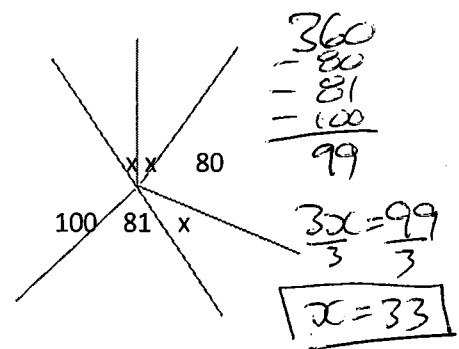
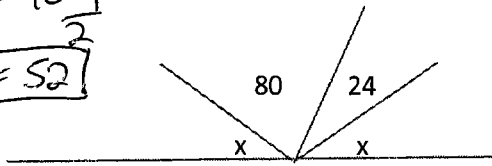
2.

$$2x = 80 + 24$$

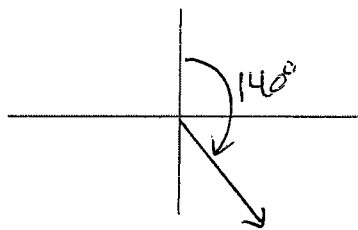
$$2x = 104$$

$$\frac{2x}{2} = \frac{104}{2}$$

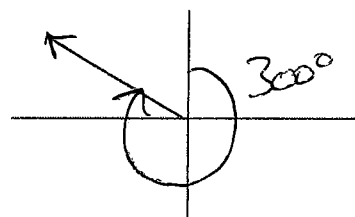
$$x = 52$$



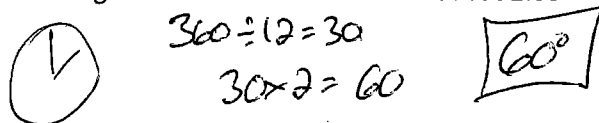
3. a. Draw a bearing of 140°



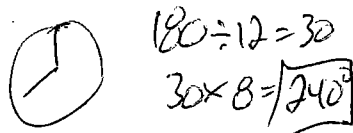
b. Draw a bearing of 300°



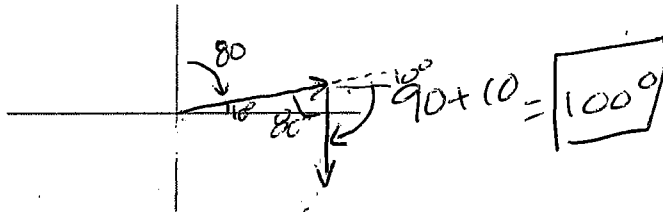
4. a. Determine the angle between the hands of a clock at 2:00



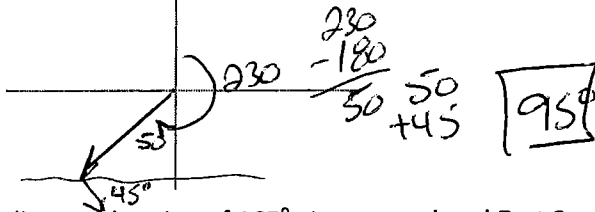
b. Determine the reflex angle between the hands of a clock at 8:00



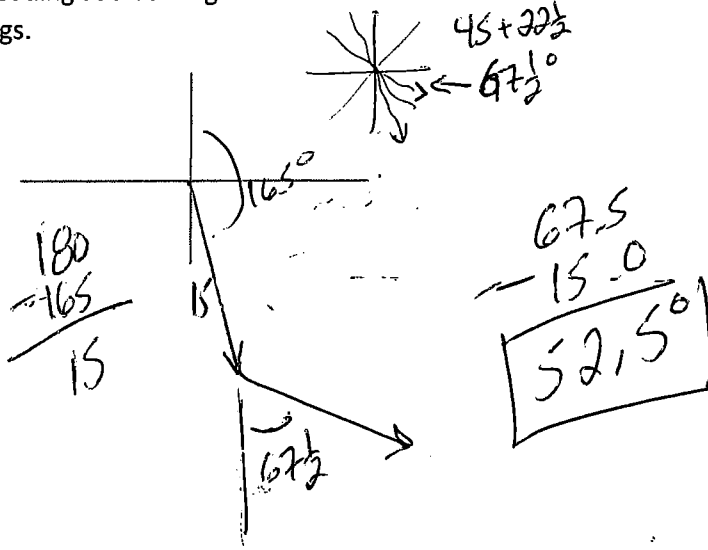
5. A ship is heading at a bearing of 80° and turns to head South. Determine the angle measure between the bearings.



6. A ship is heading at a bearing of 230° . It turns to head South East. Determine the angle measure between the bearings.



7. A ship is heading at a bearing of 165° . It turns to head East South East. Determine the angle measure between the bearings.



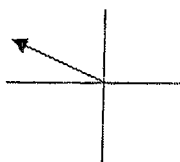
1.

Angle	Classify	Complement	Supplement	Bisected
50	acute	40	130	25
78	acute	12	102	39
120	obtuse	Na	60	60
240	reflex	Na	Na	120

2a. 38 b. 33 3. a.



b.



4. a. 60° b. 240° 5. 100° 6. 95° 7. 52.5°