

I MEASURED THIS TO BE 17mm, THUS

- Determine the distance from Wodonga to Echuca.

$$150 \times \frac{23}{17} = \frac{x}{150}$$

$$\boxed{202.5 \text{ km} = x}$$

$$17 \text{ mm} = 150 \text{ km}$$

- Determine the distance from Wilcannia to Nowra.

$$150 \times \frac{87}{17} = \frac{x}{150}$$

$$\boxed{768 \text{ km} = x}$$

- Determine the distance from Nambucca Heads to Moree

$$150 \times \frac{38}{17} = \frac{x}{150}$$

$$\boxed{335 \text{ km} = x}$$

- Determine the distance from Merimbula to Mudgee

$$150 \times \frac{55}{17} = \frac{x}{150}$$

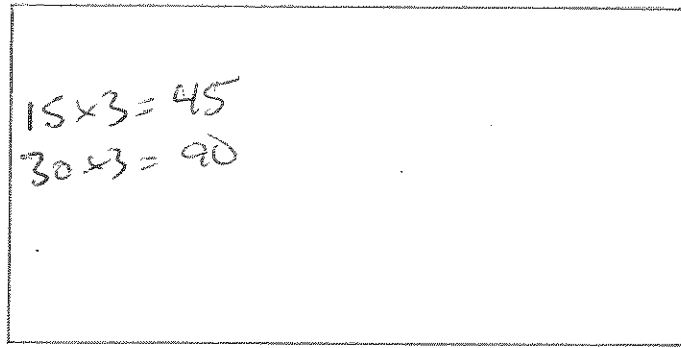
$$\boxed{485 = x}$$

Answers: 1) 202.5km 2) 727.5km 3) 322.5km 4) 450km

WE'RE CLOSE -  
DEPENDS HOW ACCURATE  
YOU MEASURE

→ Bigger

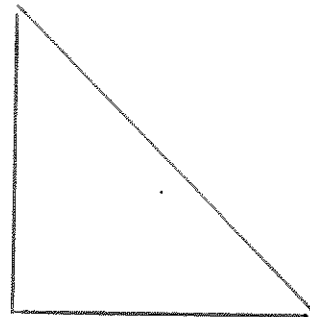
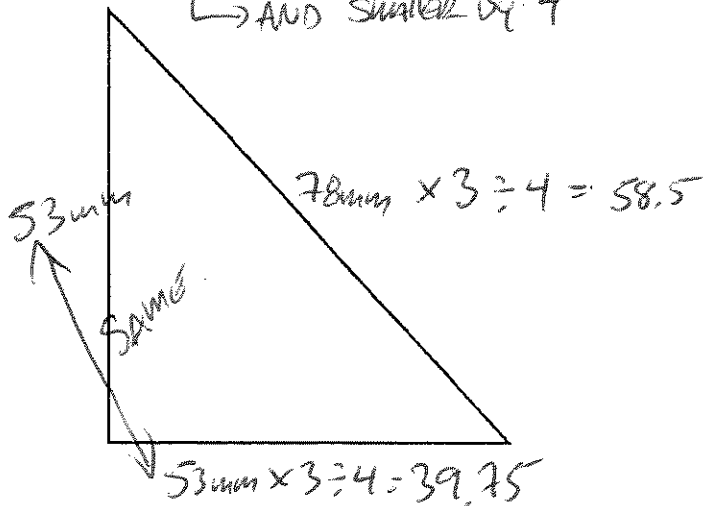
5. Draw a 3:1 scale drawing



→ Bigger By 3

6. Draw a 3:4 scale drawing.

→ AND smaller by 4



Answers 1.



2.

