

* DON'T WORRY SO MUCH ABOUT THE DIMENSIONS
 * JUST MAKE IT WORK WITH THE METAL YOU HAVE

THESE DRAWINGS WERE MADE "AFTER-THE-FACT," BASED ON WHAT I WOULD *PROBABLY* DO DIFFERENTLY IF I WERE TO DO IT AGAIN.

THE SPRING SHOWN HERE IS NOT LISTED IN THE DRAWINGS. JUST FIND A SUITABLE ONE THAT WILL WORK.



**Mr. WELLWOOD'S
 SHOP OF HORRORS**
www.gwellwood.com

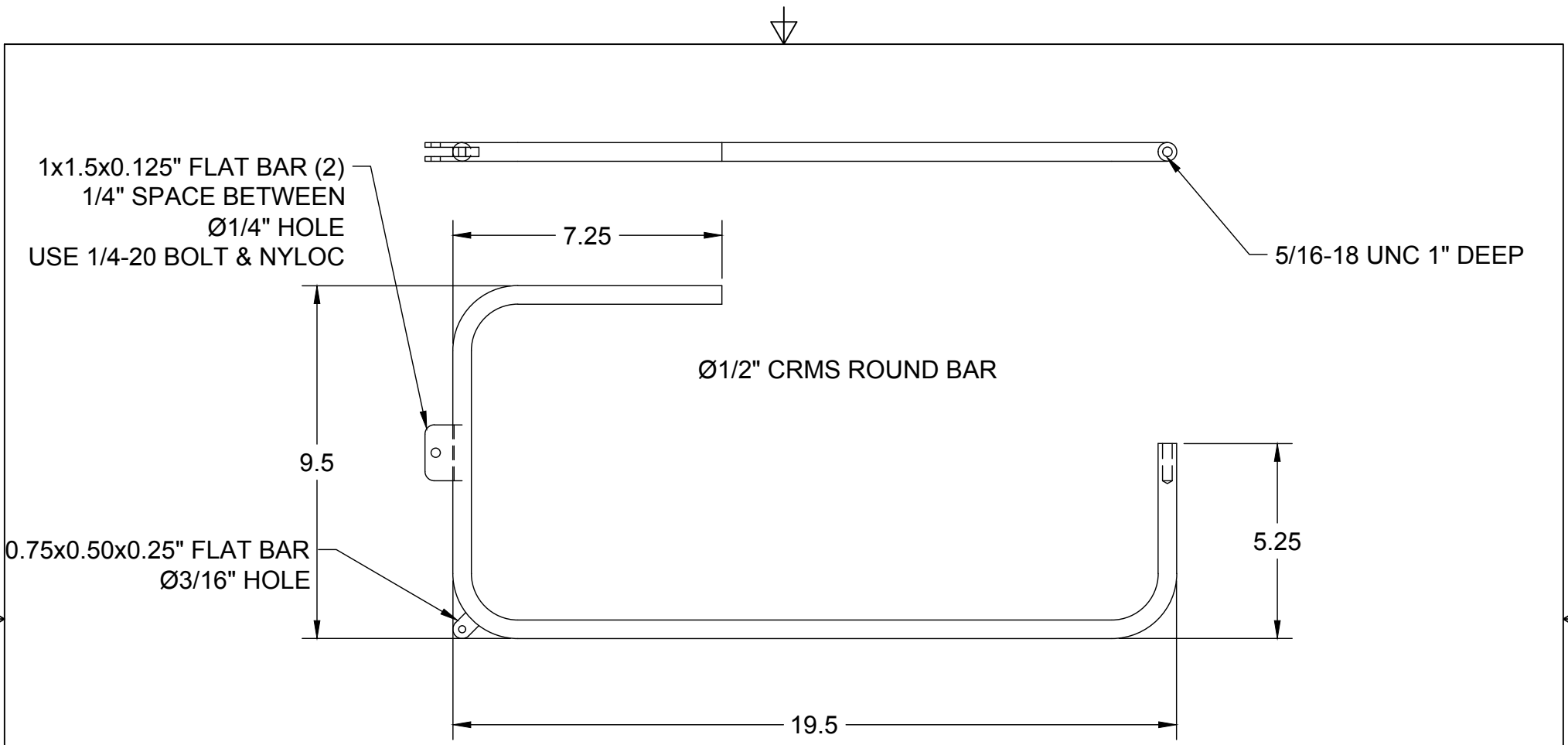
PROJECT

BULLSEYE PICK

TITLE


ASSEMBLY

APPROVED	SIZE	CODE	DWG NO	REV
CHECKED	A			
DRAWN	Greg Wellwood	21/05/18	SCALE 1:4	WEIGHT
			SHEET 1/5	

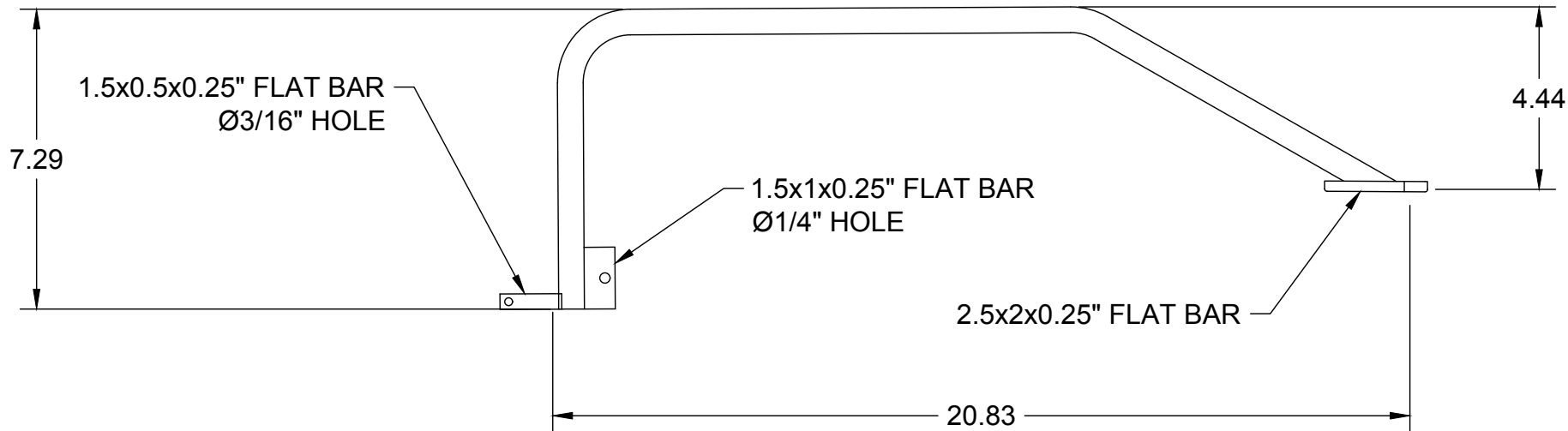
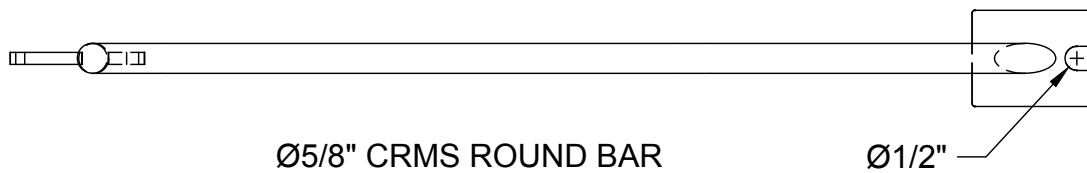


* DON'T WORRY SO MUCH ABOUT THE DIMENSIONS
 * JUST MAKE IT WORK WITH THE METAL YOU HAVE

WHEN I MADE THIS, I MADE ALL BENDS ON A HOSSFELD WITH THE DIES I HAD AVAILABLE. THE BENDING RADIUS DOESN'T REALLY MATTER. YOU COULD USE A TORCH TO HEAT & BEND, OR JUST BIG BURLY MUSCLES AND AN INTENSE STARE.

 Mr. WELLWOOD'S SHOP OF HORRORS www.gwellwood.com	PROJECT			
	BULLSEYE PICK			
TITLE				
HAMMER ARM				
APPROVED	SIZE	CODE	DWG NO	REV
CHECKED	A			
DRAWN	Greg Wellwood	21/05/18	SCALE 1:4	WEIGHT
			SHEET 2/5	





- * DON'T WORRY SO MUCH ABOUT THE DIMENSIONS
- * JUST MAKE IT WORK WITH THE METAL YOU HAVE

WHAT MATTERS HERE IS THAT THE HAMMER TIPS HIT IN THE CENTER OF THE DOLLY, WITH THE DOLLY PERPENDICULAR TO THE HAMMER TIP. BEAT IT INTO SUBMISSION, WHILE SHOUTING "I WILL NOT BE DOMINATED BY AN INANIMATE OBJECT!"



Mr. WELLWOOD'S
SHOP OF HORRORS
www.gwellwood.com

PROJECT

BULLSEYE PICK

TITLE

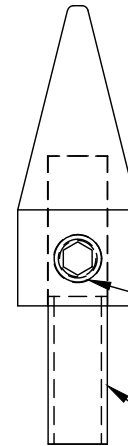
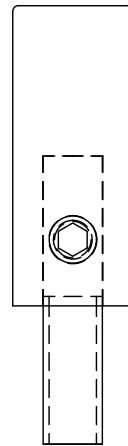
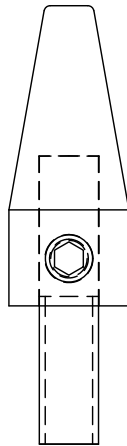
DOLLY ARM

APPROVED	SIZE	CODE	DWG NO	REV
CHECKED	A			
DRAWN	Greg Wellwood	21/05/18	SCALE 1:4	WEIGHT
			SHEET	3/5





TIPS SHAPED AS YOU SEE FIT



Ø5/8" CRMS

1/4-20 SET SCREW

5/16-18 UNC
CAP SCREW
HEAD CUT OFF

I MADE REMOVEABLE TIPS,
AND TURNED A COUPLE
DIFFERENT SHAPES. I LIKE
HAVING OPTIONS AND/OR
THE ABILITY TO MAKE
CHANGES.

HARDENED STEEL TIPS
MIGHT BE WISE, BUT I'M NO
PRO; I'M JUST SOME GUY
WHO IS TOO CHEAP TO "PAY
THE MAN."



Mr. WELLWOOD'S
SHOP OF HORRORS
www.gwellwood.com

PROJECT

BULLSEYE PICK

TITLE

HAMMER TIPS

APPROVED	SIZE	CODE	DWG NO	REV
CHECKED	A			
DRAWN	Greg Wellwood	21/05/18	SCALE 1:1	WEIGHT
			SHEET 4/5	





I CONFESS, I BUILT IT FIRST,
 "ON THE FLY." AND JUST
 LIKE A FAST-FOOD MENU,
 THE REAL THING ISN'T
 ALWAYS LIKE THE
 PICTURES. BUT IT WORKS.



**Mr. WELLWOOD'S
 SHOP OF HORRORS**
www.gwellwood.com

PROJECT

BULLSEYE PICK

TITLE

BUYER'S REMORSE

APPROVED	SIZE	CODE	DWG NO	REV
CHECKED	A			
DRAWN	Greg Wellwood	21/05/18	SCALE N/A	WEIGHT
				SHEET 5/5