

# AutoCAD Basics – Assignment 1

---

This tutorial will show you the following:

- Setting Drawing LIMITS
- Setting SNAP
- Setting GRID
- Drawing basic LINES

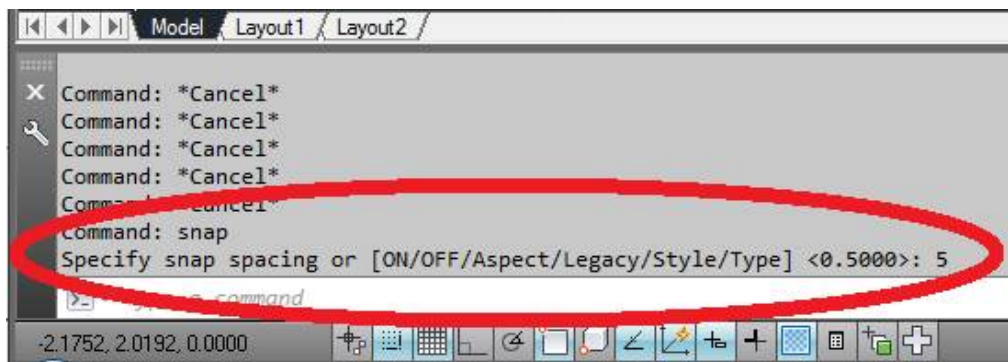
You will need to have completed these basics before moving on.

---

## SETTING UP THE DRAWING

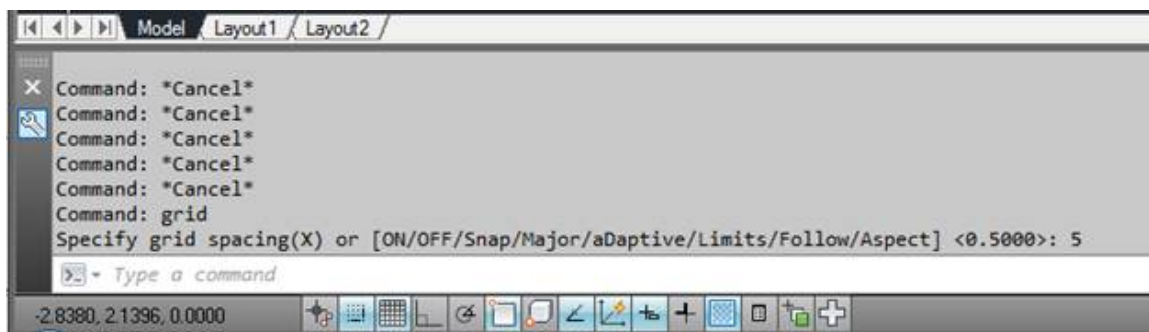
Type SNAP

Change the SNAP setting to 5

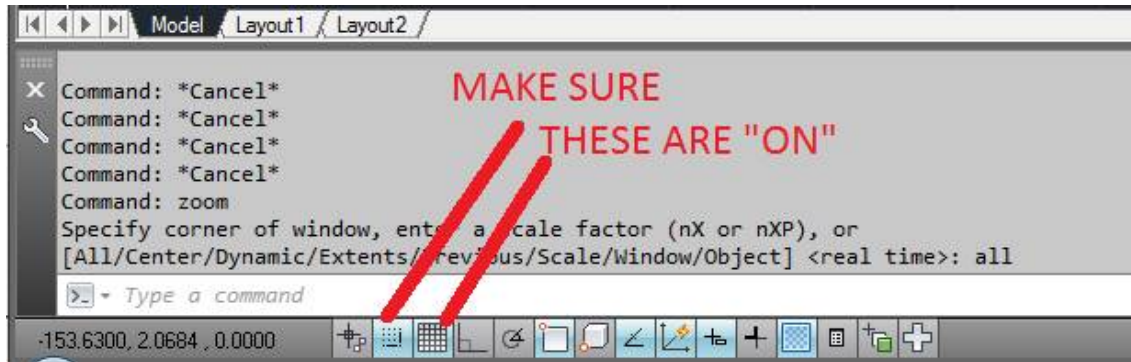


Type GRID

Change the GRID setting to 5



Now type ZOOM, then ALL to get a clear view of your drawing space



From your DRAW menus, select RECTANGLE

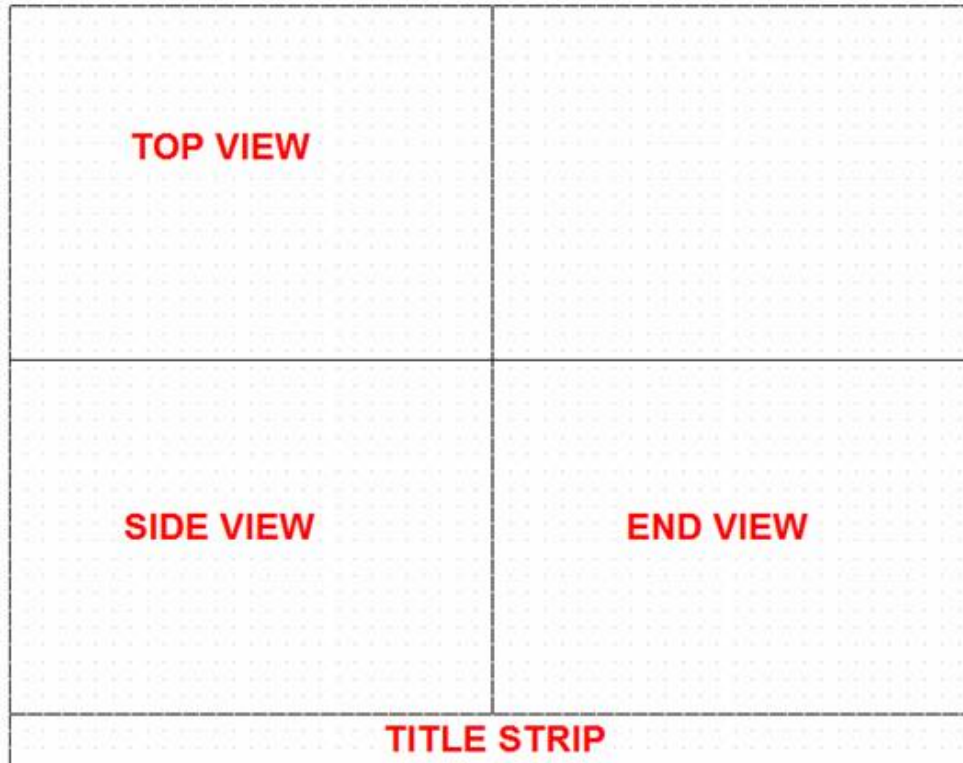
Type "0,0" to start drawing this rectangle from the ORIGIN

Now type "280,220" to complete this rectangle 280 units wide, and 220 units tall.

Type Z for ZOOM, and then A for ALL to see the entire rectangle.

Draw another horizontal LINE for a title strip, 15mm up from the bottom

Now use the LINE command again, to divide your page in quarters like this (these are guidelines – we will delete them later):



You are now ready to draw your objects

The top view of your drawing must be DIRECTLY above your side view

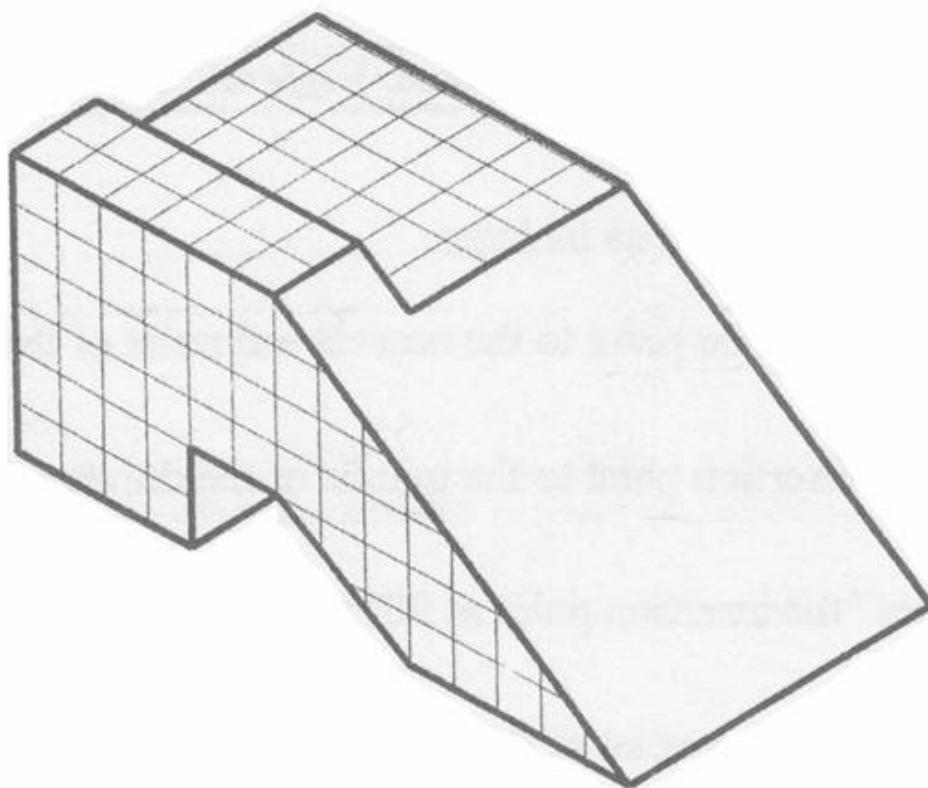
The end view must be DIRECTLY beside your side view

All views should share common dimensions

**Get in the habit of saving frequently – programs crash, problems occur – prepare for it!**

Use your new skills to draw the following object – count the squares to get the right size!

***NOTE: Draw your hidden lines in a different colour – double click the lines and you can change colour from “ByLayer” to “Hot Pink” or something. We will learn about line types in the next section.***



***You need to master these skills before you move on. Show your work to your instructor NOW.***

***SAVE AS "AutoCadBasics1.dwg"***

**[Continue on to AutoCAD Basics 2....](#)**