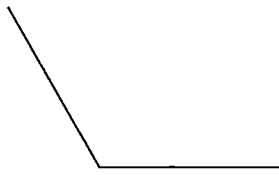


Key

Angles

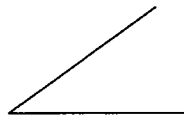
Find the measure of each angle to the nearest degree.

1)



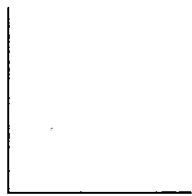
120°

2)



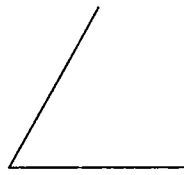
35°

3)



90°

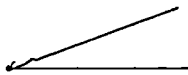
4)



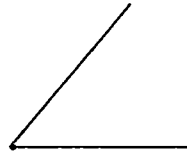
60°

Draw an angle with the given measurement.

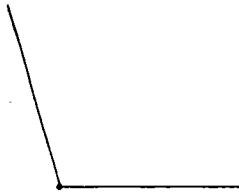
5) 20°



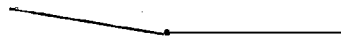
6) 50°



7) 105°

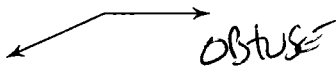


8) 170°



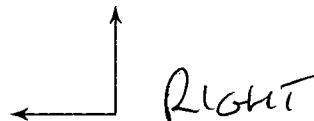
Classify each angle as acute, obtuse, right, or straight.

9)



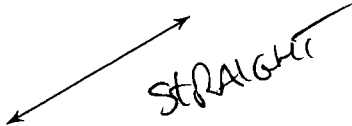
obtuse

10)



right

11)



straight

12)



acute

13) 90° Right

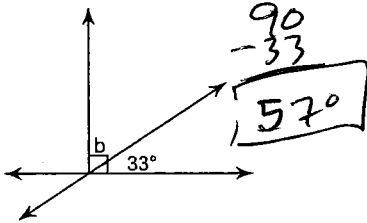
14) 110° Obtuse

15) 29° Acute

16) 180° Straight

Find the measure of angle b.

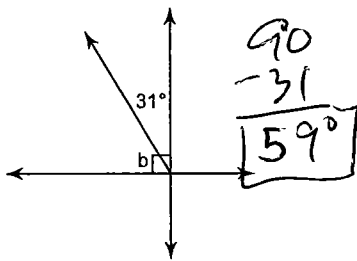
17)



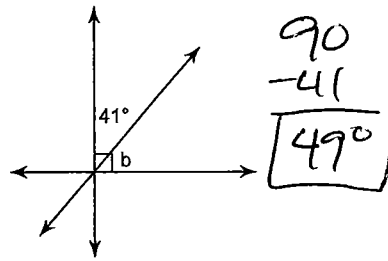
18)



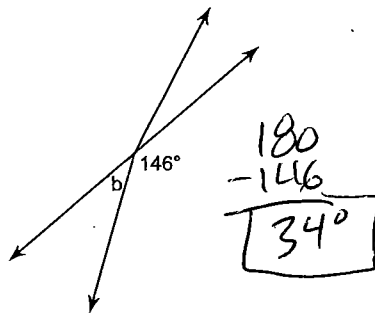
19)



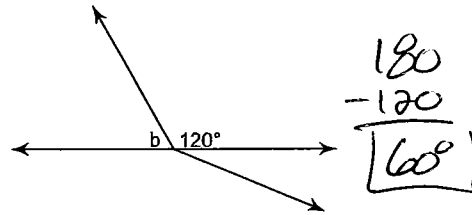
20)



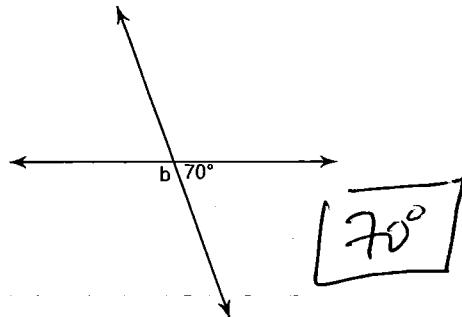
21)



22)



23)



24)

